

X 23 NOV. 1984

### Samuel Eastman, 69

HAYDEN LAKE, Idaho — Samuel Verick Eastman, 69, former owner of the Lake Mary Ronan Lodge and Resort at Proctor, Mont., died Nov. 23 at his home in Hayden Lake, Idaho. 1984

He was born Oct. 18, 1915, in Beaver, Ore. He graduated from Lincoln High in Portland in 1935.

In 1937, he married Lestā Brock in Vancouver, Wash.

He graduated from Washington State University in 1940 and later played semi-pro baseball for two years. He taught and coached at Garfield, Wash., until 1941 when he entered the service during World War II. He was commissioned a lieutenant colonel and was decorated during the Phillipine Campaign. After his discharge in 1945, he had a grocery store and locker plant in Tacoma, Wash.

In 1947, he moved to Coeur d'Alene, Idaho, where he owned the Independent Meat Market until 1949. He served in the Idaho House of Representatives from 1950 to 1952. He owned the Lake Mary Ronan Lodge and Resort in Proctor until 1960 when he became a land developer and contractor in Montana, Idaho and Hawaii. He returned to Hayden Lake in 1982.

He is survived by his wife at home; two sons, Terry of Hayden Lake, and Charles of Hillsboro, Ore.; a brother, Wayne, Portland, Ore.; seven grandchildren and three great-grandchildren.

Services have been held.

The family suggests memorials to Hospice of North Idaho, P.O. Box 820, Coeur d'Alene, Idaho.

X 5 APRIL 1984

### Myrtle Ecklund

5 Apr. 1984  
Myrtle E. Ecklund, 64, of Nashua, died Thursday in a Great Falls hospital after a long illness.

She was born at Prairie Elk and attended schools in Circle. After her marriage to George Ecklund, the couple lived in eastern Montana, North Dakota, and Minnesota. He died in 1977.

Mrs. Ecklund had been living in Nashua. At the time of her death, she was in Great Falls for medical treatment.

Surviving are two daughters, Mrs. Earle (Sandra) LaRoque, Lincoln, and Georgia Trathen, Calif.; a son, Gary Nelson, Libby; seven grandchildren and one great-grandchild; two sisters, Mrs. Clyde (Nelle) Bridges, Great Falls and Gladys Dethman, Wolf Point; and two brothers, Wayne Parsley, Wolf Point and James Parsley, Helena.

Memorial services were held in the Chapel of Chimes with the Rev. Kendrick Gould officiating. Cremation has taken place.

X 2 AUG. 1984

### Ronald Edstrom, 55

2 Aug. 1984  
TROY — Ronald R. Edstrom, 55, died of a heart attack Thursday at his home in Troy.

He was born March 1, 1929, at Plentywood. He moved to Port Orchard, Wash., in 1941. He attended barber college in Seattle in 1945, served in the U.S. Army from 1945 to 1948, and worked at Puget Sound Shipyard until 1957.

In 1966, he moved to Troy, where he was a long-haul truck driver and also operated a backhoe.

He is survived by his mother Anne Edstrom, Troy; one daughter, Rhonda Mardha, Reno, Nev.; two sons, Steven Edstrom, Troy, and Bradley Edstrom Olson, Bremerton, Wash.; one sister, Dolores Uhr, Fort Stockton, Texas; and six grandchildren.

Funeral services will be 7 p.m. Tuesday at the Troy Church of God with the Rev. James Bushnell officiating. Cremation will follow, with burial at Woodland Memorial Park at Bremerton, Wash., at a later date.

The Vial Funeral Home in Libby is in charge of arrangements.

X 21 DEC. 1984

### Steven Edstrom, 31

21 Dec. 1984  
TROY — Steven W. Edstrom, 31, Troy, died of a self-inflicted gunshot wound early Friday morning at St. John Lutheran Hospital in Libby.

He was born Sept. 2, 1953, in Bremerton, Wash., to Ronald and Marlene Edstrom. He moved to Great Falls in 1958 and later moved to Port Orchard, Wash. He moved to Troy in 1981.

He was preceded in death by his father in August 1984.

Survivors include a son, Tyler Edstrom, Manchester, Wash.; his mother and stepfather, Marlene and Raymond Olson, Bremerton; two brothers, Bradley Olson, Troy, and Alan Olson, Bremerton; a sister, Rhonda Mridha, Reno, Nev.; and his grandmother, Anne Edstrom, Troy.

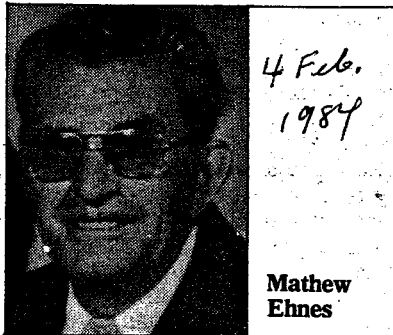
Funeral services will be 1 p.m. Friday at Miller-Woodlawn Memorial Park in Bremerton. Local arrangements are under the direction of Vial Funeral Home in Libby.

X 22 FEB 1984

<sup>22 Feb 1984</sup>  
GLASGOW — EDWARDS, Ida, 82, died Wednesday in Portland, Ore. Services will be 11 a.m. Monday at the Bell Chapel with burial in Highland Cemetery. She was born in Glasgow, went to school in St. Ignatius and lived most of her life on a farm north of Opheim. She was married on Nov. 28, 1918, to Oscar Edwards at Kalispell. He died in 1971. She is survived by one brother, Jim Walette, Ocean Shore, Wash.; two sons, Leo, McMinnville, Ore., and Bud, Glasgow; and five grandchildren and 10 great-grandchildren.

X 4 FEB 1984

### Mathew Ehnes



Pearl Harbor survivor Mathew B. Ehnes, 74, 3448 8th Ave. N., died suddenly at his home Saturday morning.

He was born in Roscoe, S.D., where he received his early education in a country school. He entered the U.S. Army in 1941 and was discharged in 1945, having served in the South Pacific with the 25th Infantry. He was at Pearl Harbor at the time of its bombing.

After his discharge, he returned to the Roscoe area and worked on several farms before coming to Great Falls in 1951. He worked for Carl Weissman and Sons Inc. for a year and then worked for the Anacoda Company copper refinery before retiring in 1972.

He married Delores Scheuffele in 1945 at McLaughlin, S.D.

Survivors include his wife, Delores, Great Falls; three sons, Dennis L., Grand Canyon, Ariz., Gary M., Orange, Calif., and Sgt. James M. Tustin, Calif.; daughters, Mrs. Bonnie Wilbert, Great Falls, and Mrs. Jerry Powell, Germany; two brothers, Simon, Roscoe, S.D., and Roy, Ipswich, S.D.; five sisters, Mrs. Katherine Bitz, Portland, Ore., Mrs. Ben (Margaret) Rienbold, San Diego, Mrs. Joe (Barbara) Volk, Calif.; Mrs. Maggie Meiers, Roscoe, S.D., and Mrs. Alice Roth, Aberdeen, S.D.; and four grandchildren. He was preceded in death by four brothers, his parents and two sons, Tommy D. in 1978 and Richard L. in 1970.

X 27 JAN 1984

<sup>27 Jan 1984</sup>  
HAVRE — ELLINGSON, Myrtle, 75, died Friday in her home here. The funeral will be Wednesday at 2 p.m. in Holland and Bonine Funeral Home, with burial in Highland Cemetery. She was born in Froid and grew up and attended school in the Scobey area. In 1929, she married Russell Ellingson and they moved to Havre in 1934. Ellingson died in 1971. Two sons also preceded Mrs. Ellingson in death. Surviving are a brother, Clifford Shrank, Four Buttes, three grandchildren and five great-grandchildren.

X 4 MARCH 1984

<sup>4 Mar 1984</sup>  
GLASGOW — ELDREDGE, John "Jack", 82, died Sunday in a local hospital. Services will be Wednesday at 2 p.m. at the Bell Mortuary with burial in Harrison, Mont. Born in Iowa, he was raised in Iowa and North Dakota and lived in Harrison before coming to Glasgow where he had lived the past 25 years. He worked on the Fort Peck Dam construction and also construction in Yellowstone Park. He also farmed and ranched in the Harrison and Nashua areas. In 1927, he married Florence Gamble who died in 1958. In 1959, he married Mabel Tihista. She survives, along with sons, Jerald of Harrison and Arnold, Miles City; one daughter, Nola Maack, Harrison; a stepson, Jed Tihista, Nashua; a stepdaughter, Lorene Branca, Spokane; sisters, Irma Knobf, Reynell Self and Elena Hoffman, all of Sandpoint Idaho; 12 grandchildren, and 10 great-grandchildren.

X 18 JAN 1984

<sup>18 Jan 1984</sup>  
FORT BENTON — ELLIOT, Johanna, 76, died in Sand Point, Idaho on Jan. 18. Graveside service will be Wednesday at 10 a.m. in the Riverside Cemetery, Fort Benton, with the Benton Funeral Home handling arrangements. Born in Regina, Sask., she married Frank Elliot in July 1925 in Fort Benton. She had worked as a cook in Fort Benton. In 1958 she moved to Sand Point, Idaho, where she worked as a cook for the Bonner County schools, retiring in 1967. She also worked as a seamstress in Sand Point. Her husband died in 1955. Surviving are two sons and two daughters; one brother and two sisters including Betty Emerson, Butte.

X 6 MARCH 1984

### Wilson Eby, 69

Wilson J. Eby, Kalispell, died at home Tuesday of natural causes.

He was born March 22, 1914, in Tolley, N.D., to Amber and Elsie Eby. While he was still in elementary school, the family moved to Cut Bank, where he graduated from high school. After working for awhile in the oil fields there, he joined the Army Air Corps during World War II, and saw action in Burma and India. Following his honorable discharge, he returned to Cut Bank.

On Aug. 3, 1949, he married Viola "Pat" McFarland in Casper, Wyo., and they lived in many locations throughout the western U.S., and in Canada and Pennsylvania until he retired from the oilfields in 1974. They then moved to Kalispell where they have lived ever since.

A Mason for many years, he also belonged to the Shrine in Grand Forks, N.D. He was an active member of Buffalo Hills Golf Club and a former board member.

Survivors include his wife at the family home in Kalispell; a daughter, Mrs. Brian (Patricia Ann) Bowers of Columbus, Ohio; a son, Richard A. Eby, currently of Aberdeen, Scotland; four grandchildren; four sisters, Nellie Fauque of Cut Bank, Maxine Pruitt of Sacramento, Calif., Dorla Sewell of Great Falls, and Connie Hinthier of Billings; a brother, Gerald Eby of Edmunds, Wash.; and numerous nieces and nephews.

He was preceded in death by two sisters, Jeannette Maxwell and Alice Kruse.

Visitation will be Friday from 7-9 p.m. at the Weatherford Funeral Home, after which the casket will remain closed. Funeral services will be 1 p.m. Saturday at the Weatherford Funeral Home with the Rev. Chauncey Biffle, associate pastor of Epworth United Methodist Church, officiating. Burial will follow at Glacier Memorial Gardens with military honors provided by local veterans.

The family suggests memorials to the Montana Heart Association, 435 2nd Street East, Kalispell, 59901.

X 29 July 1984

### DELORES EFFINGER

Mrs. Delores "Dee" Effinger, 65, Kalispell, died July 29 in the North Valley Hospital Extended Care Unit. She was born August 1, 1928, in Great Falls, a daughter of Arthur and Zella Clark. She had received her education in Great Falls, and on March 13, 1950, she was married to Robert J. Effinger in Billings. She was preceded in death by her husband on August 18, 1961. In 1965, she moved to Kalispell, and was employed with the Glacier Memorial Gardens until her final illness.

Mrs. Effinger was an avid bowler and was secretary of her league for many years. She is survived by a son, John R. Effinger of Fargo, N.D.; a daughter, Mrs. Norman (June) Winters of Tomahawk, Wis.; her mother, Zella Garnet Gillingham of Bigfork; a granddaughter, and several other relatives. Graveside rites and burial were Tuesday in the Sunset Memorial Gardens in Great Falls under the direction of the Johnson Mortuary.

DI 19 July 1984  
19 July 1984

### Russell Eisele, 70

Russell C. Eisele, 70, Kalispell, died of cancer Friday morning at Brendan House.

He had farmed with his mother and brother since moving to the Flathead Valley in 1935.

He was born Nov. 16, 1914, in Temple, N.D., to Edward and Amelia Eisele, and grew up in North Dakota. He never married.

He was a member of the East-side Grange.

Surviving are his mother, Kalispell; two brothers, Walter, Kalispell, and Wayne, Scottsbluff, Neb.; two sisters, Grace Brown, Kalispell, and Gladys Brist, Whitefish; several aunts, nieces, nephews and cousins.

Funeral services will be Tuesday at 2 p.m. in the Johnson Mortuary chapel with the Rev. Ron Pierce of the Swan Chapel officiating. Burial will be in Springcreek Cemetery. Visitation is today, 1-6 p.m.

DI 5 APRIL 1984

5 Apr. 1984

**Elizabeth 'Bette' Jane Ellenburg, 61**

X 2 JUNE 1984

2 June 1984

**Opal Eisenman, 66**

Opal Edith Eisenman, 66, Kalispell, died Saturday morning at Kalispell Regional Hospital.

She was born Dec. 31, 1917, in Ethridge, a daughter of Peter and Caroline Dalager. She attended elementary school in Valier and graduated from Cut Bank High School. Since 1937 she had lived in Kalispell.

Survivors include a brother, Clarence Dalager, Spokane; a sister, Martha Field, Detroit; and several nieces and nephews.

Funeral services will be Wednesday at 2 p.m. in the Johnson Mortuary Chapel with the Rev. Howard Mars of Bethlehem Lutheran Church officiating. Burial will be in Glacier Memorial Gardens.

X 21 JAN. 1984

21 Jan 1984

**Mary Elberson, 76**

Mary Rose Elberson, 76, died Saturday at the Bigfork Convalescent Center of natural causes.

She was born March 25, 1907, in Warsaw, Poland, the daughter of Joseph and Antoinette Szenter. At the age of 4, she came with her family to Newark, N.J., where she was raised and attended the public schools. For many years she was employed as a data processor and office worker for Bell Telephone in Newark.

In 1960, she married William Elberson in Union, N.J., where the couple made their home. He preceded her in death in about 1964.

She continued to live in Union until coming to Bigfork several weeks ago to live near her nephew Val Zenter.

Surviving are a brother, Stanley Lubkiewicz of Union, N.J.; a sister, Elsie Hernlick of Hillside, N.J.; and numerous nephews and nieces, including Val Zenter of Kalispell.

Mass of the Resurrection was at 2 p.m. today at the Weatherford Funeral Home with the Rev. Edmund Smith, pastor of St. Matthews Catholic Church in Kalispell, as celebrant. Burial will be at Conrad Memorial Cemetery.

Elizabeth "Bette" Jane Ellenburg, 61, Kalispell, died early Thursday morning at her home.

She was born June 12, 1922, in Great Falls, the daughter of Roy and Mabel Duncan Currell. She attended school in Great Falls and graduated from high school in 1940. She also attended Stephens College in Missouri and the University of Oregon.

After World War II she returned to Great Falls and worked at Malmstrom Air Force Base.

She was a member of the First Presbyterian Church, an active member of the Kalispell Duplicate Bridge Center, and donated many hours to the Hospital Volunteers.

On Oct. 6, 1946, she married Thomas Orrin Pennington in Great Falls and they made their home in Kalispell. He preceded her death in September 1961.

On June 19, 1974, she married Ralph W. Ellenburg in Kalispell and is survived by him at the family home.

She is also survived by three daughters, Mrs. Richard (Jaye) Vollmer of Spokane, Wash.; Pati Pennington and Mrs. Don (Holly) Hansen, both of Kalispell; a stepdaughter, Tawny Sportsman of Ketchikan, Alaska; a brother, Roy S. Currell Jr. of Dallas, Texas; four grandchildren, a niece and a nephew and numerous other relatives.

Funeral services will be 10 a.m. Saturday in the First Presbyterian Church with the Rev. Robert Laird officiating. Burial will be in Conrad Memorial Cemetery.

In lieu of flowers, the family requests memorials to the Flathead Hospice or the First Presbyterian Church of Kalispell.

Arrangements by Johnson Mortuary.



BETTE ELLENBURG

DI 22 July 1984

## Marie Ellis, 92

22 July 1984  
Marie Ellis, 92, Kalispell, died in North Valley Hospital Extended Care Unit on Sunday.

She was born April 3, 1892, in Leroy, N.D., a daughter of Patrick and Victoria Bartlett. She was educated in North Dakota.

In 1936 she moved to the Flathead Valley. She had been employed as a cook since coming here, and had worked for the American Timber Co., the Park Service in Glacier National Park, and various restaurants including Phil's Silver Grill and Alton Pierce Drug.

She was preceded in death by eight brothers; a sister; three sons, August and Orville Wulff, and N.L. Schmitz; and a granddaughter, Barbara Murphy Velasas.

She is survived by a son, Don Ellis of Dallas, Texas; three daughters, Lorraine Hendrix of Bremerton, Wash., Elsie Isakson of Twentynine Palms, Calif., and Mrs. Kenneth (Charlene) Lee of Kalispell.

27 grandchildren, 36 great-grandchildren and six great-great-grandchildren.

Graveside services will be 10 a.m. Wednesday in Glacier Memorial Gardens with the Rev. Bob Ivers of North Valley Alliance Church officiating. Friends will meet at cemetery for services. Friends and relatives may call at Johnson Mortuary until 8 tonight for visitation.

DI 22 July 1984

## George Emmert, 85

22 July 1984  
George David Emmert, 85, Trumble Creek Road, Columbia Falls, died Sunday morning at North Valley Hospital Extended Care in Whitefish.

He was born April 4, 1899, in Sac City, Iowa, a son of David and Edith Emmert. He was raised in Iowa and Minnesota and moved to Welden, Mont., at 18.

He married Martha Buxton on July 12, 1929, at Wolf Point and the couple moved to the Flathead Valley in 1935.

He worked for Superior Lumber Co. in Columbia Falls for 23 years. He also farmed part time for a number of years. He had been retired for 15 years.

He was a member of the Church of the Nazarene in Whitefish.

He is survived by his wife, Martha, at the family home; two sons, Don Emmert of Columbia Falls and Bill Emmert of Kalispell; a daughter, Mrs. Evan (Shirley) Speer of Columbia Falls; a brother, Charlie Emmert of Ephrata, Wash.; a sister, Edith Coderman of Sac City, Iowa; 15 grandchildren, 23 great-grandchildren and a number of nieces and nephews.

Funeral services will be 2 p.m. Wednesday at the Church of the Nazarene in Whitefish with the Rev. T. Gwyn Downing officiating. Burial will be in Glacier Memorial Gardens.

X 31 JAN. 1984

31 Jan 1984  
FLORENCE, Ore. — ELSBERRY, B.C. "Bev," 78, a former longtime Conrad resident, died Jan. 31 in a Vancouver, Wash. hospital after a long illness. Private services were held.

Born at Cando, N.D., he was married to Luella Thompson in North Dakota. The couple moved to Conrad in 1935 where Elsberry was in the hardware business until his retirement in 1969. During his years in Conrad, Elsberry, an avid pilot, was a member of the Pondera County Airport Commission. During World War II he had been a pilot instructor for the Army Air Corps.

After his retirement, the couple moved to Bigfork and in 1979 to Florence, Ore. His wife survives with two sons, Patrick G., Vancouver, and Michael J. of Milton-Freewater, Ore.; and a foster son, Diep Buie, Columbus, Ohio.

X 11 Oct. 1984

## Lydia Karoline

### Enseleit

Lydia Karoline Enseleit died Thursday, October 11, at her home in Hinsdale.

She was 89. 1984

Funeral services were held Monday, October 15, at 10 a.m. at the Hinsdale Lutheran Church with Rev. John Allen officiating. Music was provided by Eleanor Rosendahl and Francine Jensen. Burial was in Hillview Cemetery with Bell Mortuary in charge of arrangements.

Named as pallbearers were Alex Mogan, John Rosendahl, Harris Hofstad, Duane Johnson, Eldon Nelson and Howard Cornwell.

Born in Spirit Lake, Iowa, on February 16, 1895, she was the daughter of August and Karoline Enseleit.

She moved to Hinsdale with her family in 1910. Her father was the first Lutheran minister in Hinsdale. She was a registered nurse, having graduated from nurses' training in Sioux City, Iowa in 1926. She was employed in the obstetrics department in the Frances Mahon Hospital in Glasgow for 23 years and in a Great Falls hospital for several months before her retirement in 1958.

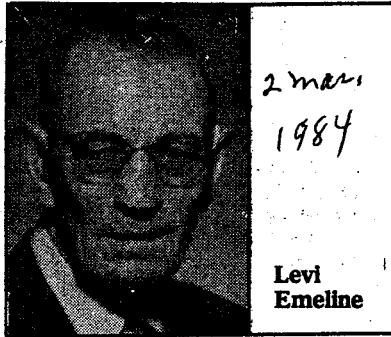
She never married.

She loved caring for all newborn babies and spoiling them before they ever left the hospital. She enjoyed playing the piano and organ.

She is survived by a nephew, Max Enseleit, of Lolo, Montana.

X 2 MARCH 1984

## Levi Emeline



Memorial service for Levi "Lee" Harrison Emeline, 83, 1106 5th Ave. N., will be Monday at 9 a.m. in the O'Connor Memorial Chapel. Cremation has taken place. Military honors will be given during an inurnment service, Monday at 4 p.m. in the Malta Cemetery.

Emeline died Friday in a Great Falls hospital. He was born at Fort

Klagit, moving with his family as a child to the Sweet Grass Hills. He entered the Army in 1917 and was serving in Siberia during the Bolshevik revolution.

Following his discharge, he moved to Malta and farmed on the family homestead there. He married Beatrice Stevens in Malta in January 1921.

He worked as a pipefitter for Montana-Dakota Utilities, retiring in 1959, and moving to Miles City. His wife died in 1960, he came to Great Falls in 1972.

In 1974, he married Hilma Roterung at Great Falls. She died in 1979.

He was a member of the 45 Plus Club and the Great Falls Senior Citizens Center.

Surviving are two sons, Eugene, Great Falls, and William, Lake Geneva, Wis.; five daughters, Clara Silver, Seattle; Shirley Gladewell, Prosser, Wash.; Iva "Pete" Peterson, Great Falls; Belva Iticina, Dodson, and Irene Baeth, Power; 18 grandchildren and nine great-grandchildren. Two sons, Harrison and Clarence, preceded him in death.

X 11 MARCH 1984

## Basil Emry

Basil Ray Emry, 83, 169 River-view Drive E., died Sunday in a local nursing home.

Private funeral services will be Tuesday at the Croxford and Sons Rose Room with the Rev. Robert L. Vander Aarde officiating. Cremation has taken place.

He was born in Washington, Iowa, and moved to Havre with his parents in 1927. He moved to Great Falls in

11 mar. 1984

1942.

Emry worked at East Base, held various jobs and was active in the Green Thumb project.

He is survived by three sisters, Helen G. Devine and Freda Devine of Sparta, Wisc.; Velma Marchal, Cedar Rapids, Iowa; two brothers, Kenneth G. Emry and Archie J. Emry, both of Great Falls, and several nieces and nephews.

X 30 JAN. 1984

<sup>30 Jan. 1984</sup>  
**OPHEIM — ERICKSON, Edna**  
Ione, 69, died Monday at her home here. Services will be 2 p.m. Friday at the First Lutheran Church in Opeheim. She was born in North Dakota and homesteaded southwest of Peerless in the West Fork Community. She married Arlie Erickson in 1929. They lived in Williston for two years, before moving to a farm near Flaxville. Later, they moved to Peerless, where they ran a blacksmith shop until 1955, when they moved to Opeheim. Survivors are her husband; three sons, Marvin, Opeheim; Ronald, Salt Lake City, and Larry, Tempe, Ariz.; seven daughters, Arlene Halverson, Peerless; Phyllis Price, Butte; Elaine Baldry and Sharon Erickson, both of Billings; Mavis Yontz, Casper, Wyo.; Janet Halverson, Shelby, and Shirley Redd, Coeur d'Alene, Idaho; two brothers; five sisters; 12 grandchildren; and 10 great-grandchildren.

X 18 JAN. 1984

## James Erickson



18 Jan

1984

James  
Erickson

James O. Erickson, 72, Tracy, a retired dairy route man, died shortly after arrival at a local hospital Wednesday.

He was born in Great Falls and spent his childhood on a homestead in the Havre area, then attended grade school at Sand Coulee and high school in Centerville.

Erickson worked in the mines at Belt and Griffin and for several years as a fireman at the Air Force base. Then he was a route man for the Farmer's Union Creamery for 28 years before his retirement in 1976.

He was active in senior citizens organizations in Centerville and Great Falls and belonged to Sand Coulee Methodist Church.

In April 1936, he and Evelyn Cook were married in Great Falls. She survives with a son, George, of Great Falls; two daughters, Margaret Acree, Anchorage, Alaska and Jacquelin Stetaniak, Las Vegas, Nev.; seven grandchildren and one great-granddaughter; and a brother, Elmer, of Helena. A brother, George L., preceded him in death.

Memorial service will be held Saturday at 2 p.m. in the Chapel of Chimes with the Rev. Joe Lawson officiating. Cremation has taken place.

X 1 DEC. 1984

## Dr. Henry Espelin

<sup>1984</sup>  
**GREAT FALLS —** Services for former Columbia Falls resident Dr. Henry Espelin, 56, were held in Great Falls Tuesday. Mr. Espelin died in Great Falls Dec. 1, following an extended illness.

He was a native of Great Falls and attended the College of Great Falls and Montana State University in Bozeman. He served in the U.S. Navy and received his bachelor's degree and doctorate from Pacific School of Optometry in Forest Grove, Ore. After his graduation he returned to Great Falls and established an optometry practice. He married Beverly Jean Ballestad in Great Falls.

In 1958, he moved his practice to Columbia Falls. The family returned to Great Falls in 1969.

He is survived by his wife; three daughters, Dawn M. Schandelson and Heidi Espelin, both Great Falls, and Nancy E. Brennan, Billings; a son, Henry T. Espelin III, Great Falls, two sisters, one brother and five grandsons.

DI 5 NOV. 1984

5 Nov. 1984

### Doris Empfield, 78

Doris R. Parker Empfield, 78, Kalispell, died Monday morning at Bigfork Convalescent Center after a long illness with cancer.

She was born July 14, 1906, in Spokane, Wash., the daughter of Margaret and William Edward Raney. She moved to Paradise, Mont., with her family when she was a child and graduated from high school in Thompson Falls. After graduation from the Cheney Normal School in Cheney, Wash., she taught her first two years in Plains. Mrs. Empfield worked in the educational field until her retirement in 1971.

She was preceded in death by her husbands, Roscoe Eugene Parker in 1948, and Harry E. Empfield in 1976.

She is survived by two sons, William W. Parker, in Kalispell, and Harold Eugene Parker in Walnut Creek, Calif.; a grandson and a granddaughter, both in California; a brother, Walter (Bud) Raney in Seattle, Wash.; a nephew and two nieces, also in Seattle.

Private memorial services will be conducted by the family.

Arrangements and cremation are under the direction of Weatherford Funeral Home in Kalispell.

KU 29 JUNE 1984

### ROBERT ENGELHARDT

3 July 1984

Robert Warren Engelhardt, 42, of Whitefish, died at the Kalispell Regional Hospital July 29. He was born June 13, 1942 in Denver, Colo., a son of Robert A. and Nellie Filoon Engelhardt. He received his education in Colorado. He was employed by Tutvedt Livestock Company in Kalispell. He had previously lived in the Flathead Valley from 1976 to 1978, before he moved to Bagley, Minn. where he worked for the Nelson Egg Farm. He returned to the Flathead Valley on June 4. He had served in the U.S. Army in 1964 and received a

medical discharge. Mr. Engelhardt was married to Phyllis Ackerson on August 31, 1964, in Tacoma, Wash. He is survived by her, one daughter, Tamra Michelle Bagley, Minn.; one son Robert Warren Jr. of Whitefish; one sister Betty Hooker of Fort Collins, Colo., and his mother, Mrs. Nellie Engelhardt of Loveland, Colo. The body has been forwarded to the Hunter Funeral Home in Loveland, Colo. where funeral services were July 3. Local arrangements were by Johnson Mortuary.

X 21 DEC. 1984

21 Dec 1984

### Leone Evans, 87

Leone Evans, 87, Kalispell, died Friday morning at her son's home in Lakeside.

She had been a Kalispell resident since moving from Helena in 1978.

She was born May 23, 1897, in Fond du Lac, Wisc., a daughter of Joseph and Georgiana Buch. She grew up in Wisconsin, then moved to Butte in 1917. She married Troy Evans there two years later.

In 1954 the family moved to Helena, where her husband was deputy director of federal bond sales.

She was preceded in death by her husband, in 1979, two brothers and a sister.

Surviving are two sons, Leo, of Lakeside, and Jay, of Carmichael, Calif.; 12 grandchildren and nine great-grandchildren.

Funeral services will be Monday at 10 a.m. in the Johnson Mortuary Chapel with the Rev. J. Torrance Harvey officiating. Private burial will be in the Conrad Memorial Cemetery.

The family suggests memorials be made to the Flathead Hospice, P.O. Box 1532, Kalispell.



01 5 DEC. 1984

**HERMAN ENGSTROM**

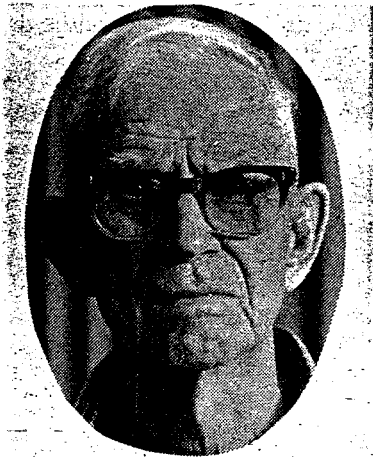
Herman Engstrom was born Feb. 22, 1896, in Wilton, North Dakota. His parents were one of the first families to homestead in Burleigh County in central North Dakota. Herman was one of 10 children born to John and Christina Engstrom. The family spoke Swedish at home and the children did not learn English until they went to school. Herman grew up and attended school in rural N.D. After that, he helped on the farm. He served in World War I in France. In 1927, he married

Agnes Thor, a neighbor girl he grew up with. They farmed until 1939, when they moved out west with their two daughters, Sylvia and Audrey. They stopped near Kalispell to visit and ended making their home here. Agnes taught school for many years at Ashley Lake, Helena Flats and then at Evergreen until she retired. Herman worked for the State Forest Service for several years. He then was a sawyer for the American Timber Co. and later he worked at Lost Creek Saw Mill until his retire-

ment. The Engstrom daughters are both married. Sylvia married Raymond Olson from Kalispell, where they make their home. They have two children and one grandchild. Audrey married Clifford Blegen from Kellogg, Idaho. They live in Kennewick, Wa. and have three children. After Herman and Agnes retired, they enjoyed a couple trips to Calif., one to Chicago and several to North Dakota and Minnesota. Herman's two hobbies have been gardening and fishing. In past years he didn't miss many days

going fishing and in the summers his garden was second to none, furnishing friends and relatives with his good vegetables and luscious raspberries. In the winters Herman enjoyed reading. Agnes died in 1981. Since then, Herman has lived with his daughters, Audrey in the winter and Sylvia in the summer. He moved to Immanuel Sept. 12, 1983. He is a member of WWI Veterans and the Bethlehem Lutheran Church.

7 Dec 1983



01 24 JUNE 1984

24 June 1984

**Michael Ezerski, 31**

Michael Peter Ezerski, 31, Kalispell, died Sunday at Kalispell Regional Hospital of injuries in a motorcycle accident.

He was born Oct. 2, 1952, in Hazard, Ky., to Peter and Hattie Ezerski. He attended schools in the Centerville, Ohio, area before enlisting in the U.S. Navy.

He enjoyed hunting, fishing and motorcycles.

He is survived by a son, Adam Ezerski in Ohio; a daughter, Crystal Ezerski in Ohio; his parents in Centerville, Ohio; three brothers, Daniel in Brookville, Ohio, Thomas in Houston, Texas, and Steven in Centerville, Ohio; a sister, Lynette Weisenborn in Miamisburg, Ohio; his grandmothers, Martha Napier in Buland, Ky., and Betty Ezerski in Fairmont, W.Va.

Services will be held in Hazard, Ky., later this week.

Local arrangements are under the direction of Weatherford Funeral Home in Kalispell.

X 1 SEPT. 1984

**Eveland newborn**

Emily Eveland, stillborn daughter of Eldon and Debra Eveland of Columbia Falls, died Sept. 1 at North Valley Hospital. 1984

Survivors include her parents of Columbia Falls and two brothers, Jeffery, 6, and Eric, 4, both of the family home in Columbia Falls; and other relatives.

Private graveside rites will be Friday at Woodlawn Cemetery in Columbia Falls with the Rev. Marc Lerner of Grace Christian Fellowship Church of Columbia Falls officiating.

Arrangements are under the direction of Austin Funeral Home of Whitefish.

X 15 SEPT. 1984

## John Engstrom



### JOHN ENGSTROM

County Commissioner John Arthur Engstrom, 51, a lifelong resident of Valley County, died of a heart attack at his farm home south of Glasgow Sept. 15, 1984.

Services were held at 2 p.m., Sept. 19, in the First Lutheran Church with Rev. Robert Nilsen officiating. Music was provided by Helen Martens and Corey Carlson.

Burial was in Highland Cemetery. Bell Mortuary was in charge of arrangements.

Serving as pallbearers were Bill Stuart, Darrell Brenna, Earl Fuhrman, Garth Maag, Jerry Wallem, Paul Olson, Sam Sauer and Dan Schilling.

A son of Adolph and Amanda Engstrom, Mr. Engstrom was born May 19, 1933, in Glasgow. He attended local schools. He married Mable Senecal Nov. 8, 1952 in Wolf Point. He farmed and ranched southwest of Glasgow throughout his adult life, turning most of the work over to his sons after he won the bid for the county commissioner's seat in 1982. He enjoyed his involvement in county government and was a dedicated official who worked full time at the job. District Judge Leonard Langen, in determining an appointee to fill the position until the election, noted that Mr. Engstrom was a "dedicated public servant who approached his public duties conscientiously and with diligence." He served on the 17-county Mental Health Board. Several years ago, he earned the Jaycee Outstanding Young Farmer of the Year Award. He enjoyed county government. He was a doer, not a talker. He was a member of the First Lutheran Church, the Montana Stockgrowers and the Elks Lodge.

Survivors include the widow, Mable, at their ranch home south of Glasgow; four sons, Robert of Havre, Wade, Jeri and Jon, all of Glasgow; three sisters, Shirley Fuhrman of Larshan, Anita Gilbert of Havre, and Vivian Hand of Glasgow, and one grandchild.

X 3 MARCH 1984

### CULBERTSON - EVENSON,

Bradley, 61, died Saturday at Culbertson Hospital. Services will be 10 a.m. Tuesday at Trinity Lutheran Church in Culbertson, with burial in Hillside Cemetery. Viewing will be Monday afternoon and evening at the Everson-Clayton Chapel in Culbertson. Born at MacIntosh, Minn., he moved to Brockton in 1947 and worked on the Solberg farm. In 1948, he married Alice Solberg at Sidney. They farmed in the Poplar and Brockton area until his retirement two years ago due to ill health. They then moved to Culbertson. A charter member of the Northeastern Montana Threshing and Antique Association, he was vice president. He is survived by his wife; a daughter, Bonnie Evenson of Culbertson; a son, David of Brockton; his mother, Ruth Evenson of Centraillia Wash.; a brother, Ronald of Cascade; four sisters, Jeannette Boldt, of Minneapolis, Minn., Corrine Persson of Glenwood, Minn., Gloria Hess of Centraillia, Wash. and Irene Hundtofte of Sidney; and four grandchildren.

X 13 NOV 1984

## Olive Ewy

Olive Ewy, 92, died Tuesday, Nov. 13, at her home in Tacoma, Washington, where she lived with her daughter and husband, Mr. and Mrs. Benson.

Ewy was born in Ruthven, Iowa, and was married in Kalispell, Montana, in 1914. She lived in the Glasgow area until 1943 when she moved to Tacoma.

She was a member of the Tacoma First Church of the Nazarene where she was active in Missionary and Sunday school work.

Surviving are three daughters of Tacoma: Mrs. Leo C. (Evelyn) Browning, Mrs. Darrel (Lois) Andrew, Mrs. Wilmont (Beatrice) Benson; one son, Rev. Philip Ewy of Everett, Wash., who has "The Way of the Cross" radio broadcast over the Glasgow station; one brother, Arthur Fosse of Brownsville, Texas; and eight grandchildren and nine great-grandchildren.

She was preceded in death by her husband, Rudolph Ewy, a daughter Bernice Shepman and a son, Charles Ewy.

The funeral services were held Friday, Nov. 16, at the Mount View Funeral Home.